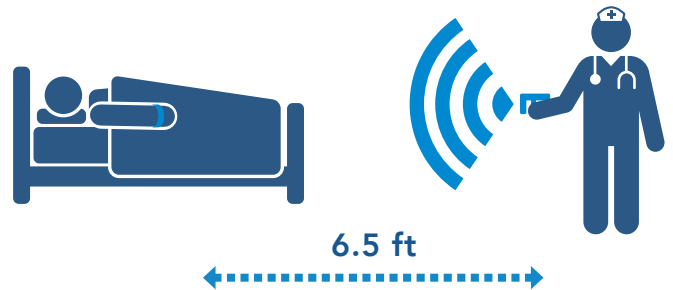




## UHF RFID SoftTouch™ Wristbands

### ✓ Minimize Intrahospital Spread of Illness

- RFID wristbands can be used to identify patients without staff-to-patient contact, reducing the risk of illness transmission.
- The anti-microbial properties of the wristbands make them suitable for use in healthcare environments.



### ✓ Enhanced Patient Care & Comfort

- Scan the wristbands from any orientation, without direct line-of-sight, and from up to 6.5-feet away from the patient.
- Read the wristbands through a blanket, allowing for identity verification without disturbing the patient.



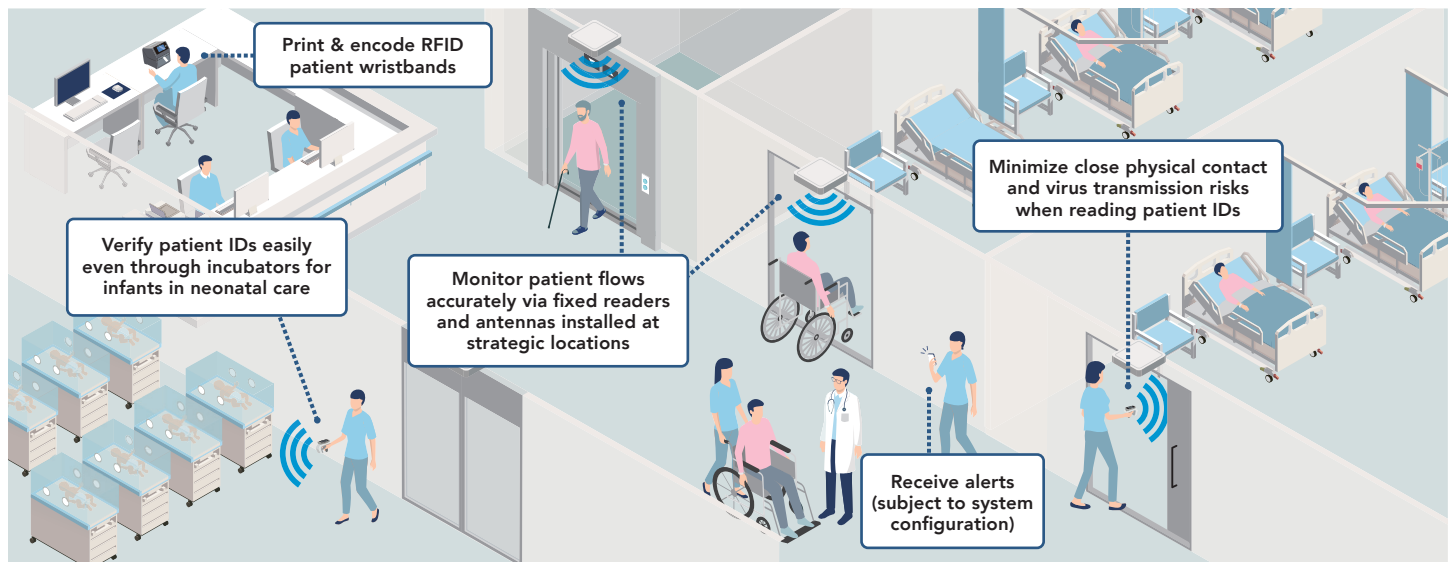
### ✓ Location Tracking to Safeguard Patients

- Monitor the movements of patients with wall or ceiling-mounted RFID readers so staff can be alerted immediately of any unexpected movement beyond defined areas.



# GENERAL SPECIFICATIONS / SoftTouch™ UHF RFID Wristbands

PRODUCT SPECIFICATIONS	DURABILITY TESTING	OPERATING CHARACTERISTICS
<b>Construction</b> Wristband: Multi-layered Film Inlay: Aluminium	<b>Abrasion Resistance</b> Exceeds 1000 rubs using crockmeter	<b>Operating Frequency</b> 860 - 960 MHz
<b>Sensing</b> Black Mark	<b>Hand Sanitizer (Pirell®) Resistance</b> Exceeds 40 rubs using crockmeter	<b>Environment</b>
<b>Imaging Type</b> Direct Thermal	<b>Betadine/Iodine Resistance</b> Exceeds 200 rubs using crockmeter	<b>Operating</b> 41 - 104°F (5 - 40°C) / 40 - 80% RH (without condensation)
RFID SPECIFICATIONS	Alcohol Resistance	Storage
<b>RFID Standard</b> EPC Class 1 Gen 2	Exceeds 40 rubs using crockmeter	32 - 104°F (0 - 40°C) / 30 - 80% RH (without condensation)
<b>RFID Specification</b> Ultra-High Frequency (UHF)	<b>Tensile Strength</b> Maximum Force: 7Kg/0.59" (Simulates pulling the wristband off a wrist)	PHYSICAL CHARACTERISTICS
<b>EPC Memory</b> 128 bits	DIMENSIONS	<b>Anti-microbial</b> Yes
<b>RFID Inlay Size</b> 2.20" x 1.14" (56 x 29 mm)	<b>Printable Area</b> 1.14" x 4.89" (29 x 124 mm)	<b>Water Resistant</b> Yes (RFID inlay is sealed)
	<b>Wristband Size</b> 1.14" x 14.0" (29 x 355.6 mm)	PACKAGING
		<b>Quantity</b> 75 wristbands per roll, 16 rolls per box = 1,200 wristbands per box



## Multiple products as one comprehensive solution

UHF RFID rinter



CT4-LX

UHF RFID direct thermal wristbands with adhesive closure



SoftTouch RFID Wristbands

UHF RFID third-party hardware



Handheld Terminals

Fixed Readers & Antennas

- RFID products contain sensitive semiconductor chips that may cause their read performance to vary substantially depending on the environment where they are used.
- Field testing for RFID is required in the customer's operating environment prior to implementation.
- As RFID solutions are built based on field testing, any subsequent changes to tagging positions and other conditions may affect their intended performance.

### SATO AMERICA CORPORATE

14125 South Bridge Circle  
 Charlotte, NC 28273  
 Phone: (704) 644-1650  
 sales-sal@sato-global.com

### LABEL MANUFACTURING, SERVICE & SALES

UNITED STATES MEXICO CENTRAL AMERICA  
 CANADA CARIBBEAN

[www.satoamerica.com/RFIDwristbands](http://www.satoamerica.com/RFIDwristbands)

©2021 SATO America. All rights Reserved. Rev A • Any unauthorized reproduction of this content, in part or whole, is strictly prohibited • SATO is a registered trademark of SATO Corporation and its subsidiaries in Japan, the U.S. and other countries. All other trademarks are the property of their respective owners.